

MULTIPLIX

Newsletter

November 2019

The Broadway | Issue No.10

Headlines in brief

- Welcome
- Site progress
- Look ahead
- Community update
- Environmental update
- Site working hours
- Who to contact



Welcome to our November update

Welcome to the latest issue of The Broadway Multiplex newsletter.

This monthly newsletter will provide an update on the works being undertaken by Multiplex Construction Europe Ltd. Multiplex has been appointed as the main contractor for the construction of Northacre's landmark transformation in Westminster.

Multiplex is a global contractor who has been creating landmark developments and delivering iconic projects for over 55 years. Employing over 6,600 people worldwide, we have 1,000 people and 44 completed projects in the United Kingdom alone.

We aim to outperform, delivering projects in a safe, responsible and sustainable manner. Multiplex is fully ISO9001, 14001 and 18001 accredited and registered with the Considerate Constructors Scheme.

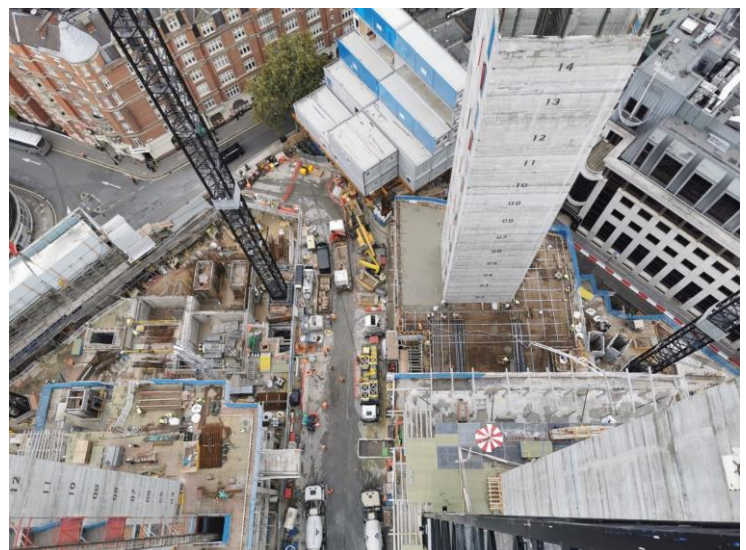
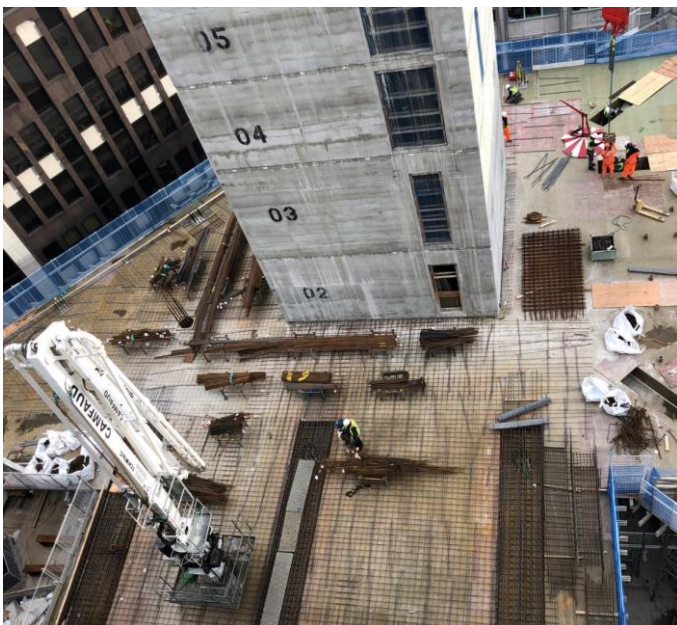
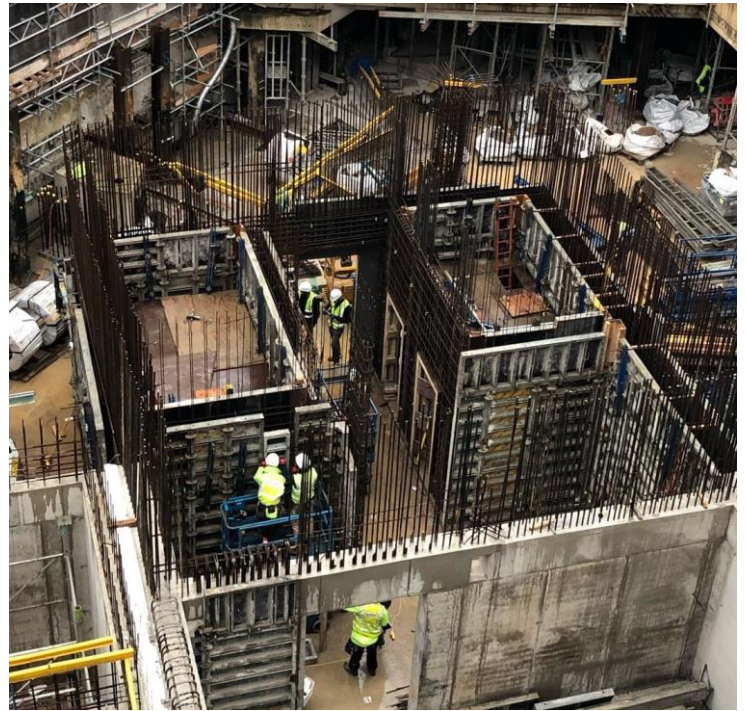
Built for **positive impact**

Site Progress

- Building 5 Level 10 slab complete.
- TC5 & TC3 cranes erected.
- Core 4 & 6 stairs and lobby slabs in progress.
- Ground floor suspended slab is 90% complete on the West side of the site.
- Building 3 Level 5 slab in progress.
- Prop to Lower Ground floor 100% removed on West side of the site.
- Core 3 pre cast staircase and lobby slab 100% completed.
- Welfare facilities fit out in progress.
- Precast columns installed to colonnade on East side of the site.
- Building 1 slipform in progress up to Level 17.
- Building 6 Level 2 completed.
- Building 4 Level 3 completed.
- Blockwork has commenced on basement areas.

Look Ahead

- Building 5 Level 12 slab complete.
- Core 4 & 6 stairs and lobby slabs will continue to progress.
- Ground floor suspended slab will be 100% complete on the West side of the site.
- Building 3 Level 7 slab will be complete.
- Concrete columns installed to colonnade on West side of the site.
- Site team will be relocated to the welfare facilities in the cabins by the end of the month.
- Building 1 core walls will be 100% complete and slipform removed.
- Building 2 slipform will commence from Ground floor.
- Building 6 Level 4 will be in progress.
- Building 4 Level 6 will be completed.
- Drylining and mechanical/electrical work activities to commence on Building 5



Built for **positive impact**

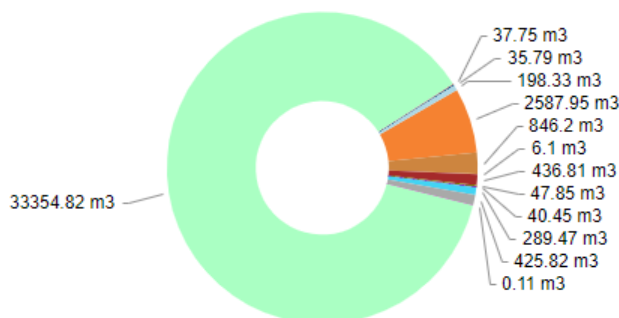
Community Update

- 03rd October 2019 – WAES Westminster Adult Employer Session – promoting construction industry and career opportunities to 15 attendees.
- 10th October 2019 – Laser Tag event raising funds to Willow Foundation. Contractors and consultants from The Broadway project fundraised over £3k playing laser tag.
- 16th October 2019 – CSCS Meet the Employer Event at City of Westminster College. Pre-screening/ interviews with 11 candidates for 'new entrants jobs'.
- 18th October 2019 – Careers Fair at Pimlico Academy. Adrian Fitton, design manager, spent the morning talking about his career journey and experiences to students on Year 7, 9, 11, 12 and 13.
- 18th October 2019 – October Pink was celebrated on site. Site staff wore pink to raise awareness to Breast Cancer.
- 22nd October 2019 – Broadway Mindfulness Talk session with Dr Reena Kotecha at the conference facilities of the Social Enterprise Westminster Cathedral.
- 28th October 2019 – Maths measuring in 3D to Year 8 students. Volunteering at St Augustine's High School.
- 29th October 2019 – The Broadway Stakeholders Engagement Evening at St Matthews Conference Centre – Social Enterprise.
- 31st October 2019 – Two mindfulness sessions delivered on site to all staff, contractors and consultants.

Environmental Update

- Up to this day we have achieved a total diversion from landfill rate of 99.23% of construction waste and a 100% diversion from landfill rate of excavation materials (mainly subsoil).
- We have used more than 23,600m³ of responsibly sourced construction materials, mainly concrete and rebar with a BES6001 and CARES environmental certification.
- 100% of all timber used onsite is from responsibly managed sources and is either FSC or PEFC certified.
- The top five waste stream to this date are the following: Soil (from the excavation stage), Concrete, Inert, Metals, and Canteen waste as shown in the chart below.

Volume of waste to date by product group



Contacts

24/7 Emergency phone line:
+44 (0)79 1278 3844



Jason Curtis
Multiplex Project Director
Jason.curtis@multiplex.global



Jon Ankiewicz
Multiplex Senior
Construction Manager
Jon.ankiewicz@multiplex.global



Luciana Campos
Multiplex Social Value &
Community Manager
Luciana.campos@multiplex.global



Dimitris Oikonomidis
Multiplex Sustainability Manager
dimitris.oikonomidis@multiplex.global

Site Working Hours

Our site working hours below are agreed with the Westminster City Council:

8am – 6pm

Monday to Friday

8am – 1pm Saturday

We will notify local residents of any variation to the above hours.

For any queries or further information
www.tenbroadway.com

